



Inspiration | Ideation | Innovation

ICUBE NEWSLETTER
May 2022

We are the home of Social Entrepreneurship and early-stage start-ups at UTM, offering resources, programs, workshops and mentorship for people who are changing the world. If you want to make a difference, ICUBE is here to help you make it.

ANNOUNCEMENTS

Apply to Pitch at #UofTPRIDEPITCH

Application deadline is May 31st 2022 @ 11:59PM

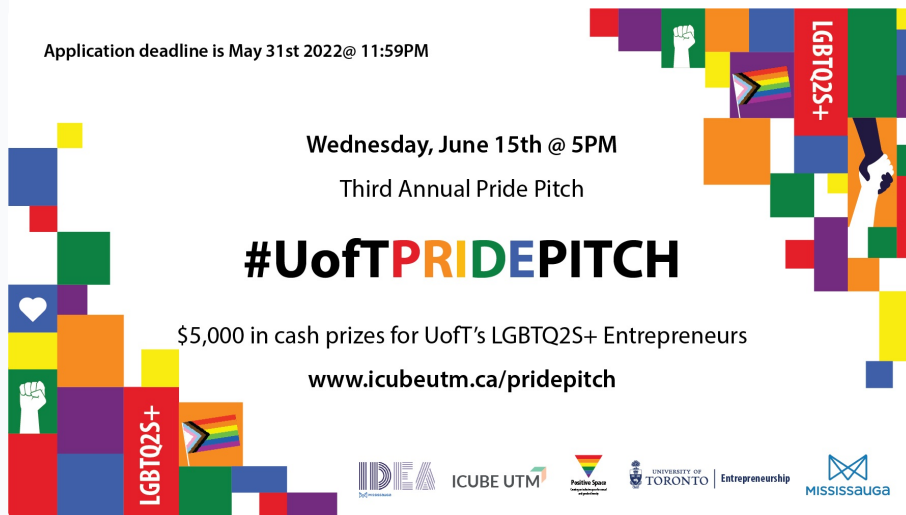
Wednesday, June 15th @ 5PM

Third Annual Pride Pitch

#UofTPRIDEPITCH

\$5,000 in cash prizes for UofT's LGBTQ2S+ Entrepreneurs

www.icubeutm.ca/pridepitch



We are thrilled to announce the third year of U of T's PRIDE Pitch. Students, staff and faculty from all three campuses and community members are welcome to apply for #UofTPRIDEPITCH - a competition that offers \$5,000 in cash prizes to recognize, reward and accelerate the U of T's 2SLGBTQ+ entrepreneurs. Selected individuals or teams will compete by showcasing their idea via a five-minute pitch to a panel of judges.

[Register Now](#)

The Canadian Printed and Flexible Electronics Symposium



The Canadian Printed and Flexible Electronics Symposium, May 17-18 | 8am-5pm is Canada's premier conference and trade show exhibition for flexible and hybrid electronics enabling the Internet of Everything.

[Register Now](#)

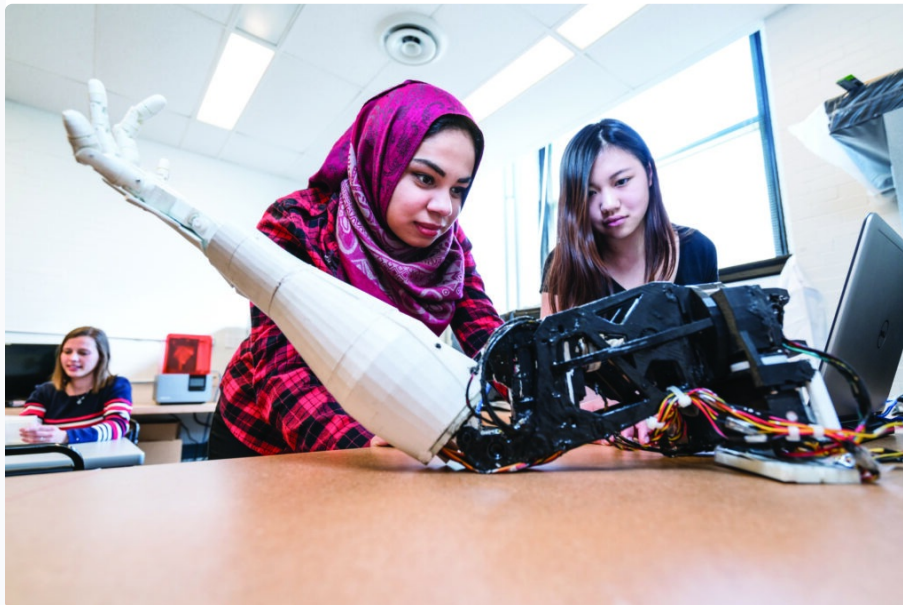
Countdown to Collision: Brampton

COUNTDOWN TO
COLLISION®

Countdown to Collision Conference, May 18 | 6pm-10pm CtC is a cross-Canada tour leading up to the Collision Conference. Brampton is proud to be a host city featuring Wes Hall from Dragon's Den.

[Register Now](#)

UTE Community Annual EDI Survey 2022



University of Toronto Entrepreneurship (UTE) is conducting an annual UTE Community EDI Survey to ensure that our ecosystem and its related programs and activities consider Equity, Diversity, and Inclusion (EDI) and strive for representation and participation from underrepresented communities.

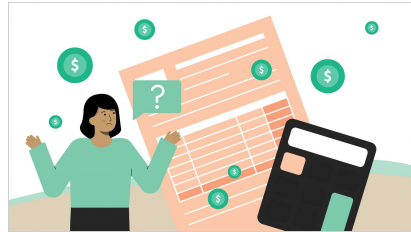
The secure survey only needs to be completed once (if you are part of multiple U of T campus accelerators) and is being collected anonymously, on a voluntary and self-identifying basis. This form is not linked to any information that could identify you, e.g. email, name, etc. This information will not be used to evaluate you as an individual. The data will only be collected and held in the office of the Director of EDI in Research and

Innovation, and only shared as de-identified, aggregated information to inform our institutional EDI reporting and best practices. Should you have additional questions, you can reach out at any time to: edi.research@utoronto.ca.

Thank you for considering the completion of this survey to help ensure we are building a welcoming and inclusive community of innovators and entrepreneurs!

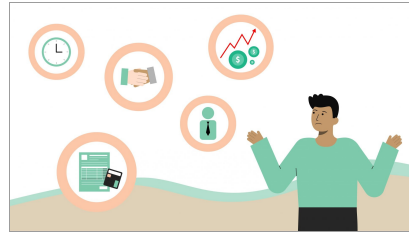
[Begin Survey](#)

LATEST ARTICLES



Other Deductions

[Learn more here](#)



Startup Challenges

[Learn more here](#)



ICUBEUTM
3359 Mississauga Rd, Innovation
Complex, Mississauga, ON L5L1C6,
CA
(905)-569-4467
icube.utm@utoronto.ca
www.icubeutm.ca



This email was sent to {{ contact.EMAIL }}
You received this email because you are registered with ICUBE - UTM

[Unsubscribe here](#)

© 2022 ICUBE - UTM